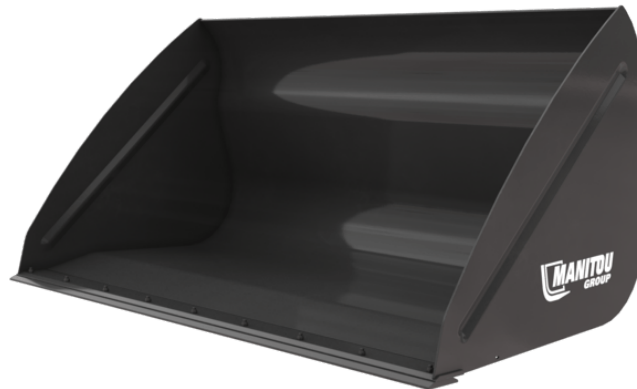


Manitou **CBA 900 93 L 1500 570543 TF**



Technical characteristics		CBA 900 / 1500
Distance to center of gravity (mm)		523
Capacities		
Capacity (kg)		886
Heaped capacity (l)		886
Struck capacity (l)		672
Weight		
Overall weight (kg)		367
Weight and dimensions		
Overall height (mm)	h17	1029
Overall length (mm)	l1	1154
Width (mm)		1500
Working Parameters		
Machine Equipment		✕

