

# X33JP

COMPACT CRAWLERS



## KEY SPECS

**Platform height:**  
30.50 m

**Horizontal outreach:**  
16.00 m

**Working height:**  
32.50 m

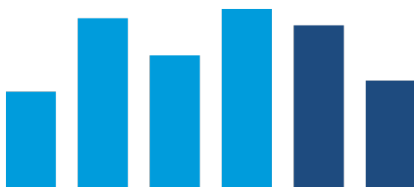
**Platform capacity:**  
300 kg

## KEY FEATURES

- 230 kg (2 persons) unrestricted capacity and 300 kg (2 persons) restricted capacity
- Articulated boom design for over 32 m max work height and 17.2 m Up & Over height
- Multi-position outriggers & track widening capability
- 360° non continuous turntable swing

## ACCESSORIES & OPTIONS

- Narrow platform 0.61 m x 0.78 m - 1 person
- 0.79 m x 1.40 m Aluminium 2 person dual side entry
- Bi-energy Lithium 300Ah + Diesel Kubota D902 16.1 kW
- Onboard battery Charger 80-240V (+/- 30 V) 50-60 Hz
- Radio control for tracks and outriggers
- 300Ah/ 64V Electric engine with Lithium battery package
- 110V, 50Hz single phase power system
- 2.10 m x 0.23 m x 0.38 m High profile black rubber tracks
- Special paint



## STANDARD SPECIFICATIONS

### Performance

Working Height	32.50 m
Platform Height	30.50 m
Horizontal Outreach (Std Platform)	16.00 m
Horizontal Working Outreach (Std Platform) **	16.65 m
Up & Over Height	17.20 m
Swing (non continuous)	360°
Platform Capacity (Unrestricted)	230 kg
Platform Capacity (Restricted)	300 kg
Basket rotation	180° (+90°/-90°)
Jib - Overall Length	1.3 m
Jib - Range of articulation	180° (+85°/-95°)
Platform size (standard 2 persons)	0.70 m x 1.6 m
Turning Radius - Outside	2.2 m

Machine weight (bi-energy) *	7.955 kg
Maximum ground bearing pressure (on outriggers)	4 daN/cm <sup>2</sup>
Maximum ground bearing pressure (on tracks)	0.79 daN/cm <sup>2</sup>
Maximum drive speed (with standard second speed) Electric	1.3 km/h
Maximum drive speed (with standard second speed) Engine	1.8 km/ ***
Gradeability	28.7%
Maximum operating slope	16°
Max. Approach / Depart angles	Front 18° / Rear 18°
Width of Undercarriage (Retracted/Extended)	1.20 m / 1.70 m

\* Certain options or country standards may increase weight and/or dimensions.  
\*\* Incl. 0.65 m outreach beyond platform  
\*\*\* Apply to diesel option

### Power

AC electric motor	380V, 50 Hz - 11 kW
Engine	Kubota D902- E3B Diesel
Batteries	Lithium 19.2 KW - 64V/300Ah
Onboard battery charger	110V-230V +/- 30V 50-60 Hz
Recharge time	0-80% SOC: 7.2 hrs. - 0-100% SOC: 9.5 hrs.

### Tires

Track size - High profile non marking tracks	2.10 m x 0.23 m x 0.38 m
--	--------------------------

### Hydraulic System

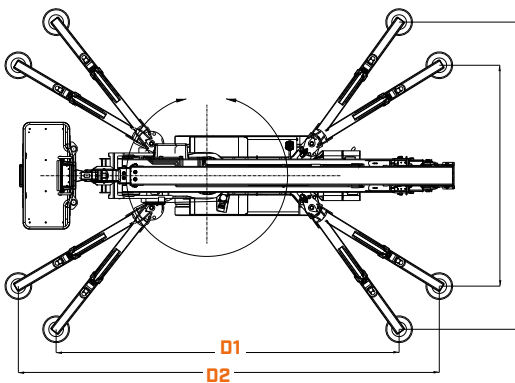
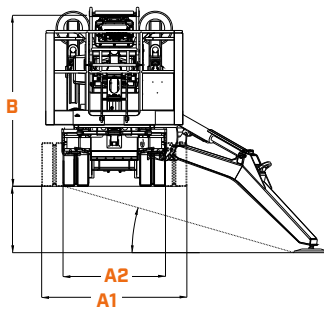
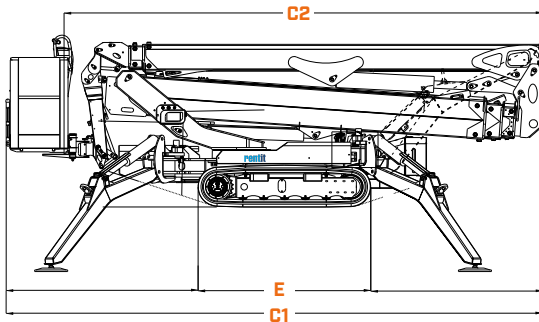
Hydraulic oil tank capacity	82 L
-----------------------------	------

## STANDARD FEATURES

- Two men platform (300 kg max. load capacity) two side entry
- 0.70 m x 1.60 m aluminium rear slide bar entry platform (2 people)
- Footswitch
- Full proportional controls (Electric proportional control system)
- Articulating jib
- Powered platform rotator (180°)
- Remote Control (via cable to platform)
- Removable platform control box
- Multi-lingual LCD display on platform box
- Load sensing system
- Platform designed for ease of removal/changeover
- AC Cable to platform
- 1/4" (6,3 mm) air line to platform
- 12,36 mm Waterline to platform
- Beacon
- Skyguard Skyline active system
- Go home function
- Forklift pockets
- Dual power operation
- 2nd drive speed
- Automatic Stabilization with Variable Outrigger Footprint
- Non Marking Outrigger Pads
- Cylinder Rod Protection on Outriggers
- Automatic cut-out when out of level
- Turntable alignment sensor and gauge
- Lubrication free bushes
- Lifting/Tie down rings
- Lanyard anchor points
- Quick Stick

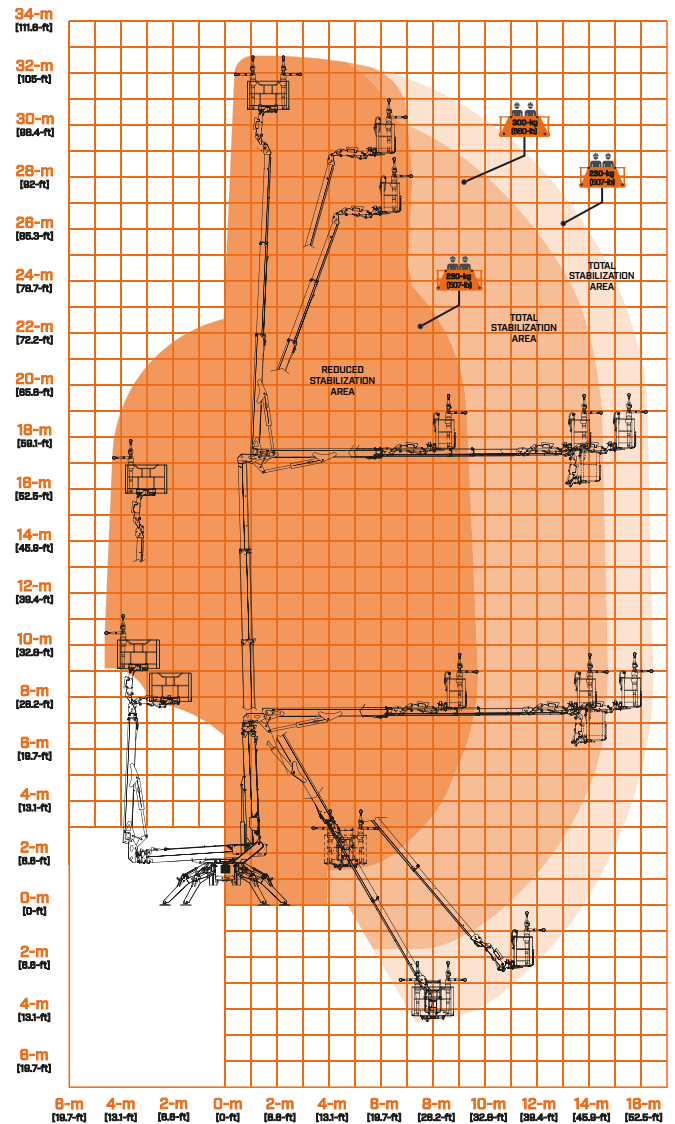
## DIMENSIONS

All dimensions are approximate



<b>A1.</b>	Stowed width (with platform)	1.70 m
<b>A2.</b>	Stowed width (without platform)	1.20 m
<b>B.</b>	Stowed height (on tracks)	1.99 m
<b>C1.</b>	Stowed length (on tracks) with Platform	6.50 m
<b>C2.</b>	Stowed length (on tracks) without Platform	5.80 m
<b>D1.</b>	Outrigger footprint - Maximum - center of plates	5.13 m x 4.60 m
<b>D2.</b>	Outrigger footprint - Reduced - center of plates	6.30 m x 3.30 m
<b>E.</b>	Track Length	2.10 m

## REACH DIAGRAM



8-m [26.2-ft] 4-m [13.1-ft] 2-m [6.6-ft] 0-m [0-ft] 2-m [6.6-ft] 4-m [13.1-ft] 8-m [26.2-ft] 8-m [26.2-ft] 10-m [32.8-ft] 12-m [38.4-ft] 14-m [45.9-ft] 18-m [59.4-ft]



### IMPORTANT

JLG is continually researching and developing products and reserves the right to make modifications without prior notice. All data in this document is indicative. Certain options or country standards will increase weight. Specifications may change to meet country standards or with the addition of optional equipment.

Due to continuous product improvements, JLG Industries reserves the right to make specification and/or equipment changes without prior notification.



**JLG EMEA BV**  
 Polaris Avenue 63  
 2132 JH Hoofddorp  
 The Netherlands  
 Tel.: +31 (0)23 565 5665  
[www.jlg.com](http://www.jlg.com)

An Oshkosh Corporation Company